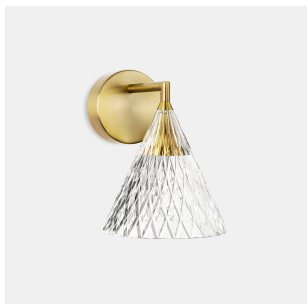


Veneto Wall Fixture Wall fixture

Designer: Benedito Design



**Description**

Wall light for indoor use.

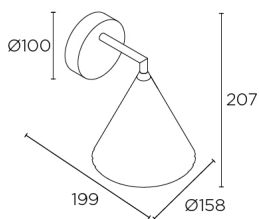
For downlighting. Structure material: Aluminium, Steel. Structure finish: Gold. Diffuser material: Methacrylate. Diffuser finish: Sandblasted. Warranty: 5 Years.

**Finish**

Gold  
Sandblasted

**Material**

Aluminium  
Steel  
Methacrylate



**TECHNICAL CHARACTERISTICS**

**Light source**

Light source: LED CREE  
Output (W): 6.7W  
Total power consumption (W): 8.3  
Color temperature: LED warm-white 2700K  
CRI: 80  
Photobiological risk: RG1  
Real Lumen: 452  
Qty Leds: 1  
Lm/Real W: 54  
Life Time: 50.000h L80B20  
Bin / Grup: 27H  
MacAdam steps: 2  
UGR: 25.2

**GEAR**

Brand: HEP  
Gear included: Yes, electronic  
Voltage / Frequency: 90-264/50-60Hz  
Power Factor: 0.90

**Luminaire**

Recessed in-ground suitable for pedestrian crossing: No  
Warranty: 5 Years

**Logistics**

Energy Efficiency: LED A++  
EAN Code: 8435575314801  
Net Weight (Kg): 0.700  
Weight in Kg (packaged): 1.160  
Packing: 270 x 260 x 220  
Masterbox: 4

The photograph may not match the reference exactly. Please read the product description to identify the finish.