

Richie Rail 17 is a unique illuminated handrail system. CNC machined wall brackets provide a beautiful finish and make for quick installation. Hollow wall brackets conceal the power supply to the LED strip, and the low voltage input makes the handrail safe to touch. Richie Rail 17 is suitable for use on residential and commercial stairs and thoroughfares.

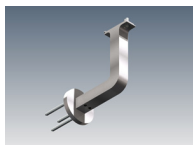
MOUNTING OPTIONS	DIFFUSER OPTIONS	SUPER SERIES LED STRIP OPTIONS		
Wall mounted	Opal	Lumens per metre	Watts per metre	Colour temp.
	Clear	310lm		2700K
		330lm	3W	3000K
		345lm		4000K
		760lm		2700K
		800lm	7W	3000K
		840lm		4000K
		1520lm		2700K
		1600lm	14W	3000K
		1680lm		4000K

- LED strip options vary depending on region – please consult your local distributor for more information. Other LED strip options are available on request, including IP54 and IP67.
- All lumen values refer to the bare LED strip. Losses through diffuser/profile are not represented. Consult photometric data.
- 5 year manufacturer's warranty on Super Series & Spec Series LED strip.

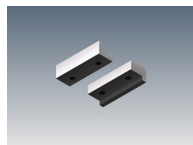
ACCESSORIES



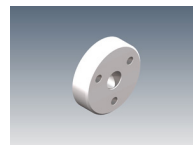
WBRR17-H-MSA-S
Wall bracket with square cover



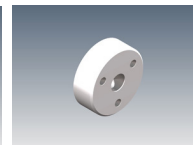
WBRR17-H-MSA-R
Wall bracket with round cover



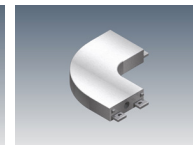
JN-ST-RR17
Straight joiner



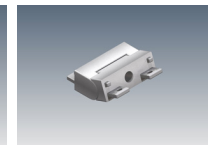
WBPBS-10
Wall bracket plasterboard spacer, 10mm



WBPBS-13
Wall bracket plasterboard spacer, 13mm



JN-90-RR17
90 degree bend



JN-V-RR17
Variable bend



WBRR17-H-MSA-S
Glass mount bracket with square cover



WBRR17-H-MSA-R
Glass mount bracket with round cover

ADDITIONAL INFORMATION

Applications	Residential or commercial stairs, lift cars, accessways.
Installation	Interior or exterior (with IP67 rated LED strip).
Materials	Extruded aluminium body and components, polycarbonate diffuser.
Finish	Natural silver anodised or custom powder coat colours.
Light source	LED ribbon strip.
Power supply	24V DC - remote driver options ranging from 6W up to 320W.
Dimmable	Various options available, please enquire.

