

The Angle Andy 25 profile is perfect for mounting in corners of joinery, corners of perpendicular walls or into the corner of a wall and ceiling. Angle Andy 25 features one smooth side, meaning it is not confined to corner mounting, but can also be mounted with one side of the extrusion visible - ideal for wall washing or glass cabinetry.

| MOUNTING OPTIONS |       | DIFFUSER OPTIONS |                 | SUPER SERIES LED STRIP OPTIONS |                  |                 | SUPER SERIES LED STRIP OPTIONS |  |  |
|------------------|-------|------------------|-----------------|--------------------------------|------------------|-----------------|--------------------------------|--|--|
| Surface mounted  | Opal  | Lumens per metre | Watts per metre | Colour temp.                   | Lumens per metre | Watts per metre | Colour temp.                   |  |  |
| Rod suspended    | Clear | 310lm            |                 | 2700K                          | 1955lm           |                 | 2700K                          |  |  |
|                  |       | 330lm            | 3W              | 3000K                          | 2060lm           | 20W             | 3000K                          |  |  |
|                  |       | 345lm            |                 | 4000K                          | 2160lm           |                 | 4000K                          |  |  |
|                  |       | 760lm            |                 | 2700K                          |                  |                 |                                |  |  |
|                  |       | 800lm            | 7W              | 3000K                          |                  |                 |                                |  |  |
|                  |       | 840lm            |                 | 4000K                          |                  |                 |                                |  |  |
|                  |       | 1520lm           |                 | 2700K                          |                  |                 |                                |  |  |
|                  |       | 1600lm           | 14W             | 3000K                          |                  |                 |                                |  |  |
|                  |       | 1680lm           |                 | 4000K                          |                  |                 |                                |  |  |

- LED strip options vary depending on region – please consult your local distributor for more information. Other LED strip options are available on request, including IP54 and IP67.  
 - All lumen values refer to the bare LED strip. Losses through diffuser/profile are not represented. Consult photometric data.  
 - 5 year manufacturer's warranty on Super Series & Spec Series LED strip.

## ACCESSORIES



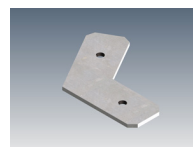
JMC-12  
Joinery mounting clip



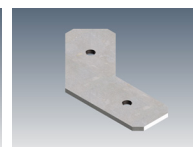
JN-ST-12  
Straight joiner



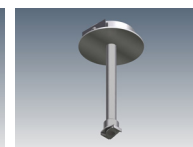
JN-90-12  
90 degree joiner



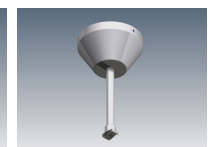
JN-120-12  
120 degree joiner



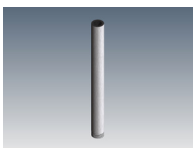
JN-135-12  
135 degree joiner



SRK-1-S / SRK-1-W / SRK-1-B  
Rod suspension kit (rod not incl)



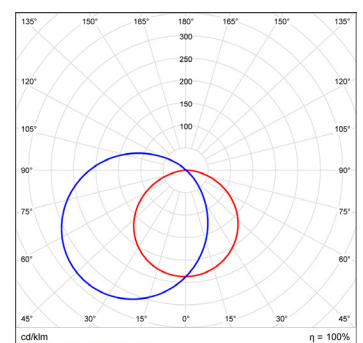
SRK-6-S / SRK-6-W / SRK-6-B  
Rod suspension kit (rod not incl)



ROD-0.5M / ROD-1M / ROD-2M  
Suspension rod - 0.5m, 1m, 2m

## ADDITIONAL INFORMATION

|              |   |
|--------------|---|
| Applications | Task lighting in kitchen cabinetry, lighting for shelving or display units, hallway lighting, wall-washing. |
| Installation | Interior or exterior (with IP67 rated LED strip).   |
| Materials    | Extruded aluminium body, polycarbonate diffuser, AES plastic end caps.                                      |
| Finish       | Natural silver anodised or custom powder coat.  |
| Light source | LED ribbon strip.   |
| Power supply | 24V DC - remote driver options ranging from 6W up to 320W.  |
| Dimmable     | Various options available, please enquire.  |



Polar curve for 1890 lumen LED strip with opal diffuser.

